

## Front of House Equipment Inventory:

### Piano:

1 – Yamaha C6 Grand

### Mixer:

1 – Behringer X32

### Monitors:

5 – JBL PRX 712

### Speakers:

2 – Meyer CQ-2

2 – Meyer 700 HP Subs

### Microphones:

6 – Radial Pro Passive Direct Input Boxes 4 – Sennheiser 865 Vocal

7 – Shure SM58 Vocal

1 – Sennheiser E609 guitar mic. 5 – Shure SM57 Instrument mic.

1 – Sennheiser Wireless Evolution w100 1 – Shure Beta 52A Kick

1 – AKG C430 overhead drum mic. 3 – Sennheiser E604 drum mic.

2 – Shure Beta 98A drum mic.

### Lighting:

1 – ETC ELEMENT 60 Console

8 – ETC Source 4 750W, 7 with ROSCO I-CUE

5 – 1000w Fresnels

5 – Q-WASH 560Z-LED

5- COLORado Batten 144 Tour

5 – SlimPAR Quad 12 IRC

### Barrels:

4 – 36°

18 – 26°

4 – 19°

### Other:

- Assorted AC/XLR cables
- Microphone stands(straight)
- Microphone stands(long boom)
- Microphone stands(short boom)
- Music stands
- Guitar stands
- Drum Riser 8x8

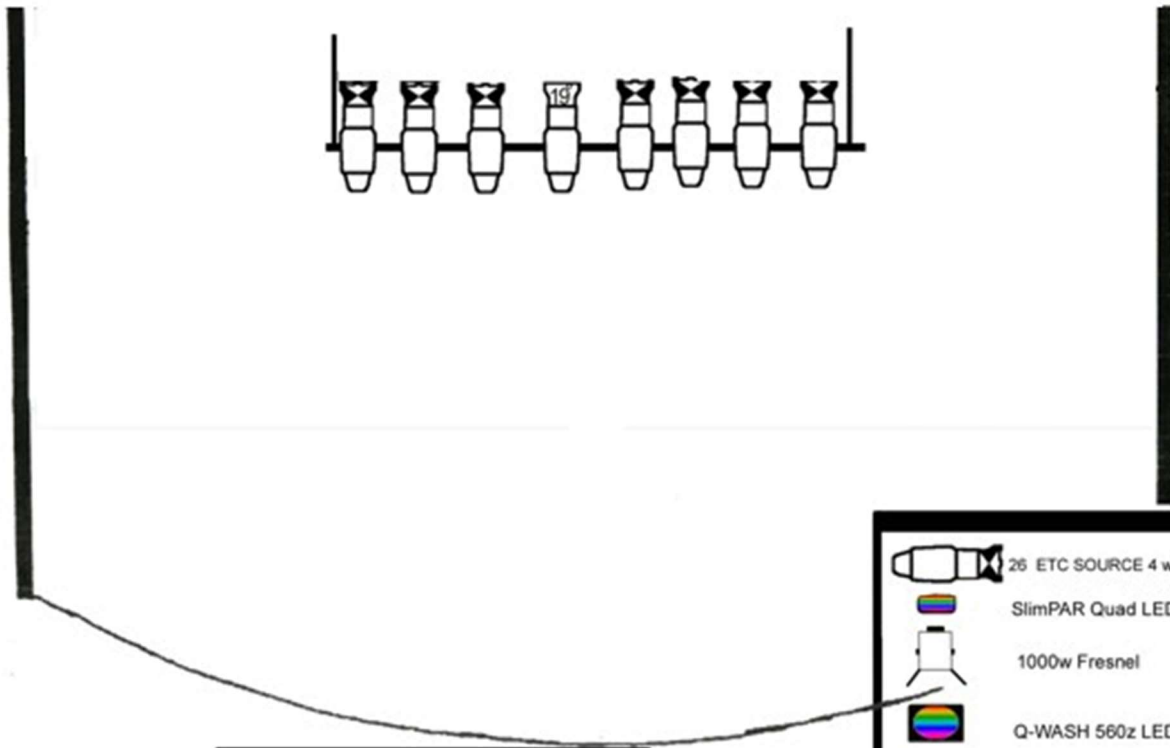
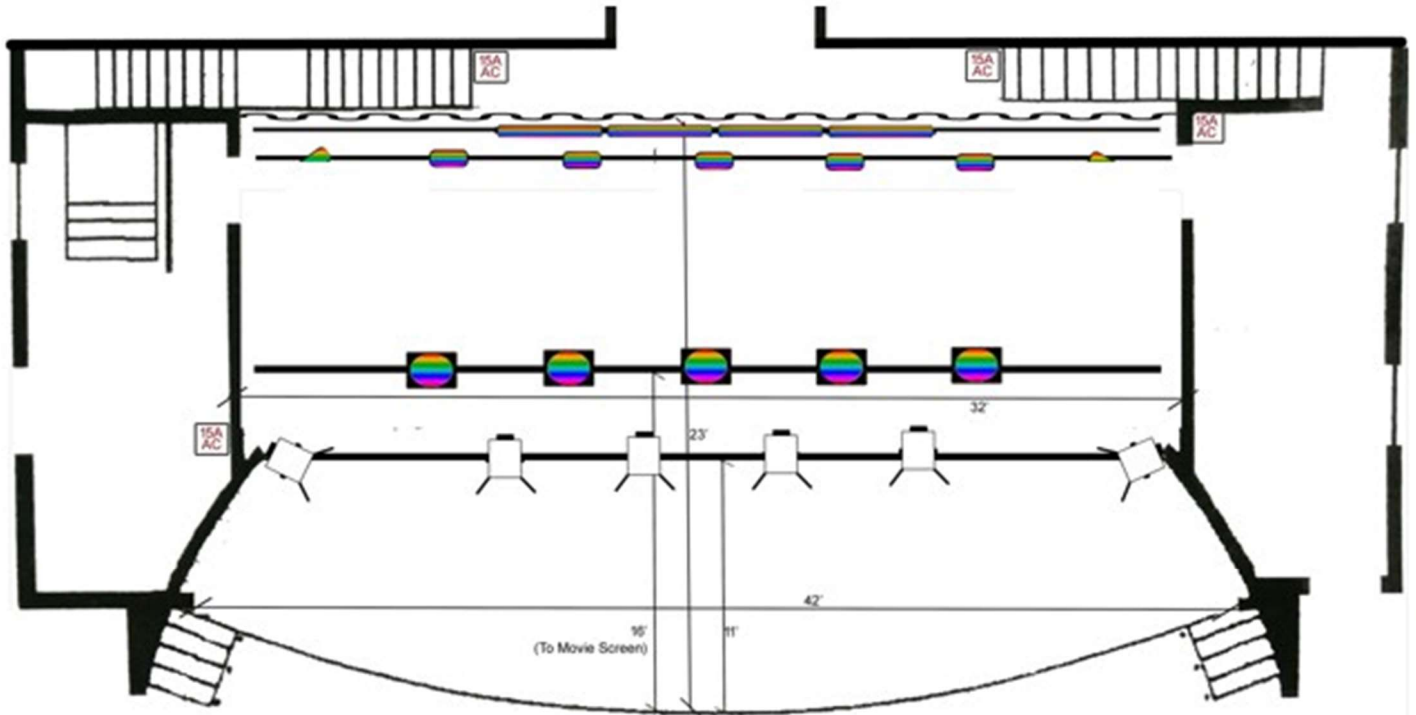
### Cinema:

Christie Solaria One projector






7.1 surround sound

Captiview personal closed captioning system (x6)

Fidelio personal hearing-impaired enhancement and visual narration devices (x6)



**BOOTH**

-  26 ETC SOURCE 4 w/ I-CUE
-  SlimPAR Quad LED
-  1000w Fresnel
-  Q-WASH 560z LED Mover
-  Colorado BTN 144 Tour